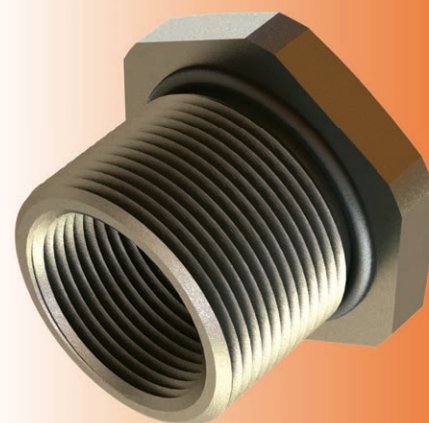
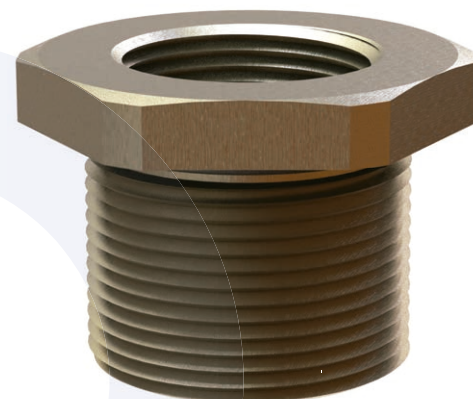


Reductores de cuerda para aplicaciones Ex d/e

Detalles Técnicos		
Material	Cuerpo	bronce, bronce latón niquelado, acero inoxidable 316L.
	O-Ring	CR (caucho de Cloropreno), Silicón
Clasificación del Grado de Protección (IP)		IP 68 (5 bar, 30 min)
		IP 66
Temperatura de Operación	Material de la glándula	
	CR (Cloropreno)	Silicón
	Ex d/e/tb	-40°C a +100°C -60°C a +130°C
Accesorio para	Atmósferas de gases y polvos potencialmente explosivas	
Adecuado para su uso en	Grupo II	Gases Grupo IIC ZONA 1/ZONA 2
	Grupo III	Gases Grupo IIIC ZONA 21/ZONA 22
Equipos marcados con	Ex II 2GD Ex db IIC Gb Ex eb IIC Gb Ex tb IIIC Db	
Ejemplo de marcaje	"BMD B-RB.. CE 0722..... II 2GD Ex eb IIC Gb Ex tb IIIC Db Ta-40°C to +100°C IP66/68 CESI 13 ATEX 066X IECEx CES 13.0022X"	
Tipo de cuerda	<ul style="list-style-type: none"> Métrica (M) ISO Pitch 1.5 NPT (N) ANSI ASME B1.20.1 PG (P) DIN 40430 (G) GAS UNI ISO 228/1 	
Accesorios	<ul style="list-style-type: none"> Sellos (arandelas) 	
Comentarios	<ul style="list-style-type: none"> O-ring disponible en cuerdas métricas Todos los accesorios se venden por separado 	



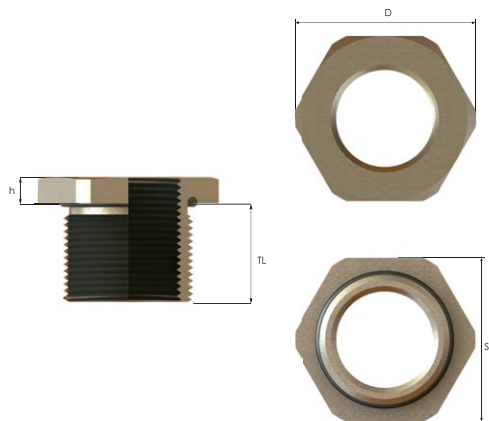
Aprobaciones	Número de certificado	Estándares
	CESI13 ATEX 066X	EN 60079-0:2012+A11:2013 EN 60079-1:2014 EN 60079-7:2015 EN 60079-31:2014
	IECEx CES 13.0022X	IEC 60079-0:2011 Edition:6 IEC 60079-1:2014 Edition:7 IEC 60079-31:2013 Edition:2 IEC 60079-7:2015 Edition:5
	N° TC RU C-TR.AA87.B.00941	OCT 31610.0-2014 OCT IEC 60079-1:2013 OCT IEC 60079-31:2013
	DNV 12.0150 X	ABNT NBR IEC 60079-0:2008 ABNT NBR IEC 60079-1:2009 ABNT NBR IEC 60079-7:2008 ABNT NBR IEC 60079-31:2011
	E-14044	IEC/EN60079-0 IEC/EN60079-7 IEC/EN60079-31 IEC/EN60079-1 IEC/EN 62444



Para más información visita nuestra página web.

GRUS

Tapones hexagonales para aplicaciones Ex d/e

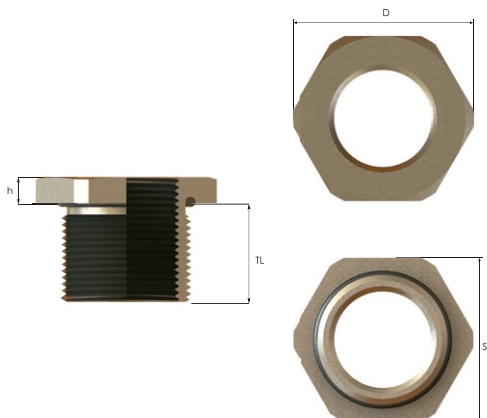


Tipo de cuerda **METRICA** acc. ISO 965 - 3

Tamaño de entrada de cuerda (macho)	Inner thread size (female)	Longitud de cuerda	Ancho de llave	Diámetro exterior del capuchón del conector glándula	Altura máxima del conector	Número de parte
		TL mm	SW mm	D mm	h mm	
M20x1,5	M16x1,5	15,0	25	27,5	4,0	B-RA1M01M
M25x1,5	M16x1,5	15,0	30	33,0	4,0	B-RA2M01M
	M20x1,5	15,0	30	33,0	4,0	B-RA2M1M
M32x1,5	M16x1,5	15,0	36	39,5	4,0	B-RA3M01M
	M20x1,5	15,0	36	39,5	4,0	B-RA3M1M
	M25x1,5	15,0	36	39,5	4,0	B-RA3M2M
M40x1,5	M16x1,5	18,0	45	50,0	4,0	B-RA4M01M
	M20x1,5	18,0	45	50,0	4,0	B-RA4M1M
	M25x1,5	18,0	45	50,0	4,0	B-RA4M2M
	M32x1,5	18,0	45	50,0	4,0	B-RA4M3M
M50x1,5	M16x1,5	18,0	55	61,0	5,0	B-RA5M01M
	M20x1,5	18,0	55	61,0	5,0	B-RA5M1M
	M25x1,5	18,0	55	61,0	5,0	B-RA5M2M
	M32x1,5	18,0	55	61,0	5,0	B-RA5M3M
	M40x1,5	18,0	55	61,0	5,0	B-RA5M4M
M60x1,5	M20x1,5	18,0	70	77,0	5,0	B-RA6M01M
	M25x1,5	18,0	70	77,0	5,0	B-RA6M02M
	M32x1,5	18,0	70	77,0	5,0	B-RA6M03M
	M40x1,5	18,0	70	77,0	5,0	B-RA6M04M
	M50x1,5	18,0	70	77,0	5,0	B-RA6M05M
M63x1,5	M20x1,5	18,0	70	77,0	5,0	B-RA6M1M
	M25x1,5	18,0	70	77,0	5,0	B-RA6M2M
	M32x1,5	18,0	70	77,0	5,0	B-RA6M3M
	M40x1,5	18,0	70	77,0	5,0	B-RA6M4M
	M50x1,5	18,0	70	77,0	5,0	B-RA6M5M
M70x1,5	M25x1,5	18,0	80	89,0	6,0	B-RA7M02M
	M32x1,5	18,0	80	89,0	6,0	B-RA7M03M
	M40x1,5	18,0	80	89,0	6,0	B-RA7M04M
	M50x1,5	18,0	80	89,0	6,0	B-RA7M05M
	M60x1,5	18,0	80	89,0	6,0	B-RA7M06M
	M32x1,5	18,0	85	94,0	6,0	B-RA7M3M
M75x1,5	M40x1,5	18,0	85	94,0	6,0	B-RA7M4M
	M50x1,5	18,0	85	94,0	6,0	B-RA7M5M
	M60x1,5	18,0	85	94,0	6,0	B-RA7M60M
	M63x1,5	18,0	85	94,0	6,0	B-RA7M6M
M80x1,5	M40x1,5	18,0	90	100,0	6,0	B-RA8M04M
	M50x1,5	18,0	90	100,0	6,0	B-RA8M05M
	M60x1,5	18,0	90	100,0	6,0	B-RA8M06M
	M63x1,5	18,0	90	100,0	6,0	B-RA8M06M
	M70x1,5	18,0	90	100,0	6,0	B-RA8M070M
M85x1,5	M50x1,5	21,0	95	105,0	8,0	B-RA85M5M
	M60x1,5	21,0	95	105,0	8,0	B-RA85M60M
	M63x1,5	21,0	95	105,0	8,0	B-RA85M6M
	M70x1,5	21,0	95	105,0	8,0	B-RA85M70M
	M75x1,5	21,0	95	105,0	8,0	B-RA85M7M
M90x1,5	M63x1,5	21,0	100	111,0	8,0	B-RA8M6M
	M70x1,5	21,0	100	111,0	8,0	B-RA8M70M
	M75x1,5	21,0	100	111,0	8,0	B-RA8M7M
	M80x1,5	21,0	100	111,0	8,0	B-RA8M80M
M100x1,5	M80x1,5	21,0	110	123,0	10,0	B-RA9M80M
	M85x1,5	21,0	110	123,0	10,0	B-RA9M85M
	M90x1,5	21,0	110	123,0	10,0	B-RA9M8M
M110x1,5	M90x1,5	21,0	120	133,5	10,0	B-RA10M8M
	M100x1,5	21,0	120	133,5	10,0	B-RA10M9M

GRUS

Tapones hexagonales para aplicaciones Ex d/e



Tipo de cuerda **METRICA** acc. ISO 965 - 3 > NPT acc. to ANSI ASME B1.20.1

Tamaño de entrada de cuerda (macho)	Inner thread size (female)	Longitud de cuerda	Ancho de llave	Diámetro exterior del capuchón del conector glándula	Altura máxima del conector	Número de parte
		TL mm	SW mm	D mm	h mm	
M20x1,5	NPT 3/8"	15,0	25	27,5	4,0	B-RA1M01N
M25x1,5	NPT 3/8"	15,0	30	33,0	4,0	B-RA2M01N
	NPT 1/2"	15,0	30	33,0	4,0	B-RA2M1N
M32x1,5	NPT 3/8"	15,0	36	39,5	4,0	B-RA3M01N
	NPT 1/2"	15,0	36	39,5	4,0	B-RA3M1N
	NPT 3/4"	15,0	36	39,5	4,0	B-RA3M2N
M40x1,5	NPT 3/8"	18,0	45	50,0	4,0	B-RA4M01N
	NPT 1/2"	18,0	45	50,0	4,0	B-RA4M1N
	NPT 3/4"	18,0	45	50,0	4,0	B-RA4M2N
M50x1,5	NPT 3/8"	18,0	55	61,0	5,0	B-RA5M01N
	NPT 1/2"	18,0	55	61,0	5,0	B-RA5M1N
	NPT 3/4"	18,0	55	61,0	5,0	B-RA5M2N
M60x1,5	NPT 3/8"	18,0	70	77,0	5,0	B-RA6M01N
	NPT 1/2"	18,0	70	77,0	5,0	B-RA6M1N
	NPT 3/4"	18,0	70	77,0	5,0	B-RA6M2N
	NPT 1"	18,0	70	77,0	5,0	B-RA6M3N
M63x1,5	NPT 3/8"	18,0	70	77,0	5,0	B-RA6M01N
	NPT 1/2"	18,0	70	77,0	5,0	B-RA6M1N
	NPT 3/4"	18,0	70	77,0	5,0	B-RA6M2N
	NPT 1"	18,0	70	77,0	5,0	B-RA6M3N
M70x1,5	NPT 3/8"	18,0	80	89,0	6,0	B-RA7M01N
	NPT 1/2"	18,0	80	89,0	6,0	B-RA7M1N
	NPT 3/4"	18,0	80	89,0	6,0	B-RA7M2N
	NPT 1"	18,0	80	89,0	6,0	B-RA7M3N
	NPT 1 1/4"	18,0	80	89,0	6,0	B-RA7M4N
M75x1,5	NPT 1/2"	18,0	80	89,0	6,0	B-RA7M1N
	NPT 3/4"	18,0	85	94,0	6,0	B-RA7M2N
	NPT 1"	18,0	85	94,0	6,0	B-RA7M3N
	NPT 1 1/4"	18,0	85	94,0	6,0	B-RA7M4N
	NPT 1 1/2"	18,0	85	94,0	6,0	B-RA7M5N
M80x1,5	NPT 3/4"	18,0	90	100,0	6,0	B-RA8M2N
	NPT 1"	18,0	90	100,0	6,0	B-RA8M3N
	NPT 1 1/4"	18,0	90	100,0	6,0	B-RA8M4N
	NPT 1 1/2"	18,0	90	100,0	6,0	B-RA8M5N
	NPT 2"	18,0	90	100,0	6,0	B-RA8M6N
M85x1,5	NPT 1"	21,0	95	105,0	8,0	B-RA8M3N
	NPT 1 1/4"	21,0	95	105,0	8,0	B-RA8M4N
	NPT 1 1/2"	21,0	95	105,0	8,0	B-RA8M5N
	NPT 2"	21,0	95	105,0	8,0	B-RA8M6N
	NPT 2 1/2"	21,0	95	105,0	8,0	B-RA8M7N
M90x1,5	NPT 1 1/4"	21,0	100	111,0	8,0	B-RA8M4N
	NPT 1 1/2"	21,0	100	111,0	8,0	B-RA8M5N
	NPT 2"	21,0	100	111,0	8,0	B-RA8M6N
	NPT 2 1/2"	21,0	100	111,0	8,0	B-RA8M7N
M100x1,5	NPT 1 1/2"	21,0	110	123,0	10,0	B-RA9M5N
	NPT 2"	21,0	110	123,0	10,0	B-RA9M6N
	NPT 2 1/2"	21,0	110	123,0	10,0	B-RA9M7N
	NPT 3"	21,0	110	123,0	10,0	B-RA9M8N
M110x1,5	NPT 2"	21,0	120	133,5	10,0	B-RA10M6N
	NPT 2 1/2"	21,0	120	133,5	10,0	B-RA10M7N

GRUS

Tapones hexagonales para aplicaciones Ex d/e

Reductores de cuerda
Áreas Clasificadas

Tipo de cuerda NPT / NPT acc. ANSI ASME B1.20.1						
Tamaño de entrada de cuerda (macho)	Inner thread size (female)	Longitud de cuerda	Ancho de llave	Diámetro exterior del capuchón del conector glándula	Altura máxima del conector	Número de parte
		TL mm	SW mm	D mm	h mm	
NPT 1/2"	NPT 3/8"	15,0	25	27,5	4,0	B-RA1N01N
NPT 3/4"	NPT 3/8"	15,0	30	33	4,0	B-RA2N01N
	NPT 1/2"	15,0	30	33	4,0	B-RA2N11N
NPT 1"	NPT 3/8"	15,0	36	39,5	4,0	B-RA3N01N
	NPT 1/2"	15,0	36	39,5	4,0	B-RA3N11N
	NPT 3/4"	15,0	36	39,5	4,0	B-RA3N2N
NPT 1 1/4"	NPT 1/2"	18,0	45	50	4,0	B-RA4N1N
	NPT 3/4"	18,0	45	50	4,0	B-RA4N2N
	NPT 1"	18,0	45	50	4,0	B-RA4N3N
NPT 1 1/2"	NPT 3/4"	18,0	55	61	5,0	B-RA5N2N
	NPT 1"	18,0	55	61	5,0	B-RA5N3N
	NPT 1 1/4"	18,0	55	61	5,0	B-RA5N4N
NPT 2"	NPT 3/4"	18,0	65	72	5,0	B-RA6N2N
	NPT 1"	18,0	65	72	5,0	B-RA6N3N
	NPT 1 1/4"	18,0	65	72	5,0	B-RA6N4N
	NPT 1 1/2"	18,0	65	72	5,0	B-RA6N5N
NPT 2 1/2"	NPT 3/4"	28,0	75	83	6,0	B-RA7N2N
	NPT 1"	28,0	75	83	6,0	B-RA7N3N
	NPT 1 1/4"	28,0	75	83	6,0	B-RA7N4N
	NPT 1 1/2"	28,0	75	83	6,0	B-RA7N5N
	NPT 2"	28,0	75	83	6,0	B-RA7N6N
NPT 3"	NPT 1"	28,0	95	105	8,0	B-RA8N3N
	NPT 1 1/4"	28,0	95	105	8,0	B-RA8N4N
	NPT 1 1/2"	28,0	95	105	8,0	B-RA8N5N
	NPT 2"	28,0	95	105	8,0	B-RA8N6N
	NPT 2 1/2"	28,0	95	105	8,0	B-RA8N7N
NPT 3 1/2"	NPT 1 1/4"	28,0	110	123	10,0	B-RA9N4N
	NPT 1 1/2"	28,0	110	123	10,0	B-RA9N5N
	NPT 2"	28,0	110	123	10,0	B-RA9N6N
	NPT 2 1/2"	28,0	110	123	10,0	B-RA9N7N
	NPT 3"	28,0	110	123	10,0	B-RA9N8N
NPT 4"	NPT 1 1/2"	28,0	120	133,5	10,0	B-RA10N5N
	NPT 2"	28,0	120	133,5	10,0	B-RA10N6N
	NPT 2 1/2"	28,0	120	133,5	10,0	B-RA10N7N
	NPT 3"	28,0	120	133,5	10,0	B-RA10N8N

Tipo de cuerda NPT acc. to ANSI ASME B1.20.1 > METRIC acc to. ISO 965 - 3						
Tamaño de entrada de cuerda (macho)	Inner thread size (female)	Longitud de cuerda	Ancho de llave	Diámetro exterior del capuchón del conector glándula	Altura máxima del conector	Número de parte
		TL mm	SW mm	D mm	h mm	
NPT 1/2"	M16x1,5	15,0	25	27,5	4,0	B-RA1N01M
NPT 3/4"	M16x1,5	15,0	30	33	4,0	B-RA2N01M
	M20x1,5	15,0	30	33	4,0	B-RA2N1M
NPT 1"	M16x1,5	15,0	36	39,5	4,0	B-RA3N01M
	M20x1,5	15,0	36	39,5	4,0	B-RA3N1M
	M25x1,5	15,0	36	39,5	4,0	B-RA3N2M
NPT 1 1/4"	M16x1,5	18,0	45	50	4,0	B-RA4N01M
	M20x1,5	18,0	45	50	4,0	B-RA4N1M
	M25x1,5	18,0	45	50	4,0	B-RA4N2M
	M32x1,5	18,0	45	50	4,0	B-RA4N3M
NPT 1 1/2"	M20x1,5	18,0	55	61	5,0	B-RA5N1M
	M25x1,5	18,0	55	61	5,0	B-RA5N2M
	M32x1,5	18,0	55	61	5,0	B-RA5N3M
	M40x1,5	18,0	55	61	5,0	B-RA5N4M
NPT 2"	M25x1,5	18,0	65	72	5,0	B-RA6N2M
	M32x1,5	18,0	65	72	5,0	B-RA6N3M
	M40x1,5	18,0	65	72	5,0	B-RA6N4M
	M50x1,5	18,0	65	72	5,0	B-RA6N5M
NPT 2 1/2"	M50x1,5	28,0	75	83	6,0	B-RA7N5M
	M60x1,5	28,0	75	83	6,0	B-RA7N60M
	M63x1,5	28,0	75	83	6,0	B-RA7N6M
NPT 3"	M63x1,5	28,0	95	105	8,0	B-RA8N6M
	M70x1,5	28,0	95	105	8,0	B-RA8N70M
	M75x1,5	28,0	95	105	8,0	B-RA8N7M
NPT 3 1/2"	M80x1,5	28,0	110	123	10,0	B-RA9N80M
	M85x1,5	28,0	110	123	10,0	B-RA9N85M
	M90x1,5	28,0	110	123	10,0	B-RA9N8M
NPT 4"	M80x1,5	28,0	120	133,5	10,0	B-RA10N80M
	M85x1,5	28,0	120	133,5	10,0	B-RA10N85M
	M90x1,5	28,0	120	133,5	10,0	B-RA10N8M
	M100x1,5	28,0	120	133,5	10,0	B-RA10N9M